

# TEAM CHALLENGE DAY (TCD)

This is the perfect opportunity to take your team or group to the next level! The Team Challenge Day is the 1 day Immersive leadership experience **at our leadership campus closest to you.** During this experience, teams will build on their natural talent and take their potential to the next level by accomplishing challenges as a group and through collaboration, reflection, leadership training, team building and goal planning. Give your personal and team leadership ability the edge by signing up today!

## FORMAT

1 day program, divided into four segments with focus on individual skills, working with others, communication, and team dynamics. Your fun, hands on day includes team building activities as well as optional rock climbing, zip-lining and/or archery depending on location and time-frame. All sessions include goal setting/reflection sessions to tie concepts to your group or team. This is done in one day and can be planned from 2-7 hours.

## WHO CAN PARTICIPATE

Perfect for all teams or groups (sports teams, clubs, student government groups, youth groups, church groups, etc.)

## INCLUDES

- All Inclusive Program, with lunch option available.

"Our Summit Leadership Team Challenge Day was a great team-building experience for my softball team. The SL team did a great job of creating a comfortable environment that challenged their limits and verbalized how functioning out of one's comfort zone may look different for different people. The icebreakers that they started with were a great way for the group to gain confidence going into the activities and the staff showed great passion for creating a thriving team building experience."

- Mary Decker: Ottawa Hills Softball Coach



# CLASSROOM LEADERSHIP SERIES (CLS)

The Classroom Leadership Series is a set of 7 individual leadership programs that are designed to be delivered by the teacher, in the classroom or the location of choice, as part of their lesson plan. The 7 programs can be purchased individually, or as a full set. Each topic can be integrated into other lesson plans where the teacher feels appropriate or delivered as a stand-alone program. Each program can be delivered in as short as 20-30 minutes or can be expanded further as time allows. Each topic aligns with the curriculum of the Team Challenge Day and the summit leadership program. Each program is activity based, fun, and simple to deliver.

## THE 7 PROGRAMS ARE

- Self-awareness
- Listening
- Managing Conflict
- Accountability
- Vulnerability
- Servant Leadership In Action
- GRIT & Discipline

## EACH OF THE PROGRAMS INCLUDE

- High level content related to the track's topic
- Assignment outlines to drive learning and understanding
- Fun activity outlines and supplies for each activity to get the classroom engaged
- Direct contact and support with Adventure Point's Leadership Program Staff

Contact our team today at (616) 426-6110 or [info@adventurepoint.org](mailto:info@adventurepoint.org) to get started on your groups' leadership journey today!

# ADVENTURE POINT LEADERSHIP SERIES



ADVENTURE  
POINT

616-426-6110  
3213 Walker Ave NW  
Grand Rapids, MI 49544





# SUMMIT LEADERSHIP PROGRAM (SLP)



The Summit Leadership Program is the pinnacle leadership development experience for students and is designed to equip emergent leaders with knowledge, skills, and experience, delivered by leadership mentors and business leaders. Adventure Point partners with your school to provide an immersive hands-on leadership program that participants can include on college and job applications. Delivered in a way where the students have fun while learning and growing, Students will learn and practice Social and Emotional Learning concepts centered around Leadership from leadership expertise in the community. Groups also have the option to enroll in concurrent enrollment to receive three college credits from Adrian College when completing the program.

## PROGRAM

The SLP is a school year-long program (September - May). Each cohort meets every month throughout the school year for programming, which includes 2 retreats at one of our leadership campuses and 7 workshops throughout the school year. The in-school programming is typically delivered once a month in 1-3 hour sessions throughout the school year. However, the format can be adjusted to the school's needs and schedule. The in-school program is facilitated by our staff and supported by your teachers and administrators. Programs in school are immersive sessions that include interactive games and activities designed to drive learning outcomes in a fun team environment. The program includes a kickoff and closing retreat at one of our leadership campuses focused on team-building, communication and more. The program uses fun, hands on activities to drive understanding of core leadership principles and concepts.

## WHO CAN PARTICIPATE

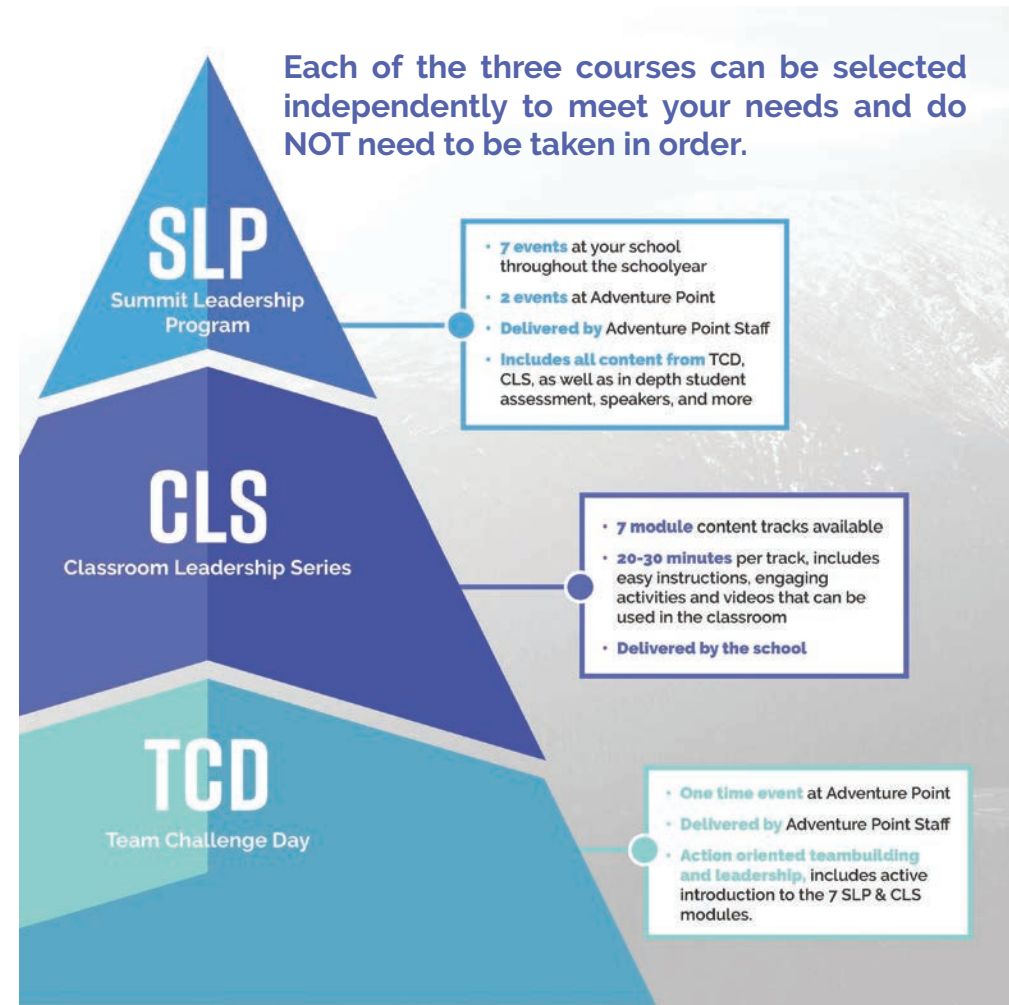
The SLP is open to any 8th-12th grade groups. Our team partners with your school and staff to serve your chosen group of students in school based on your schedule. The group can be integrated into an existing class or built as a stand-alone program in your school.

## INCLUDES

- Our in-depth leadership curriculum including various engaging activities (activity supplies included)
- Summit Leadership's team of Leadership Professionals and Volunteer Community Leaders & Speakers
- Retreat days at our outdoor leadership campus closest to your school

## Fun · Immersive · Experiential · Values based

Values-based leadership instilled in students can help develop stronger self-worth and work ethic, also leading to a higher graduation rate.



All three leadership courses are built from these core concepts:



"The ability for our students to develop character and competencies in communication, conflict resolution, teamwork, goal setting, grit and more is paramount to their ability to function and achieve in a high school setting. The activity-based model really helps our students connect to this valuable content."

-Nathan Robrahn, Kenowa Hills High School Principal

Since it's inception in 2019, hundreds of students have completed SLE program and by using survey driven data we have seen growth in all of the Summit Leadership core concepts.